

Greetings DataDoors User,

Thanks for signing up! DataDoors allows you to find all of the available imagery and maps for your Area of Interest in about 30 seconds!

There are two parts to DataDoors, the server-side (which resides in a secure facility across the internet) and the ArcMap client which is an extension that works with all versions and licensing levels of the ESRI desktop GIS application.

The DataDoors ArcMap client must be downloaded for you to have access to DataDoors. We are sorry for the inconvenience, but happy that you are getting the best service in direct, customized data distribution.

There is very clear documentation on installing the extension and using the system at-

<http://www.datadoors.net/Documents/Default.aspx>

Typically, it takes about 30 seconds to do the installation.

There are also some other documents at that link with tips explaining common questions about ArcMap that we've compiled from customer inquiries.

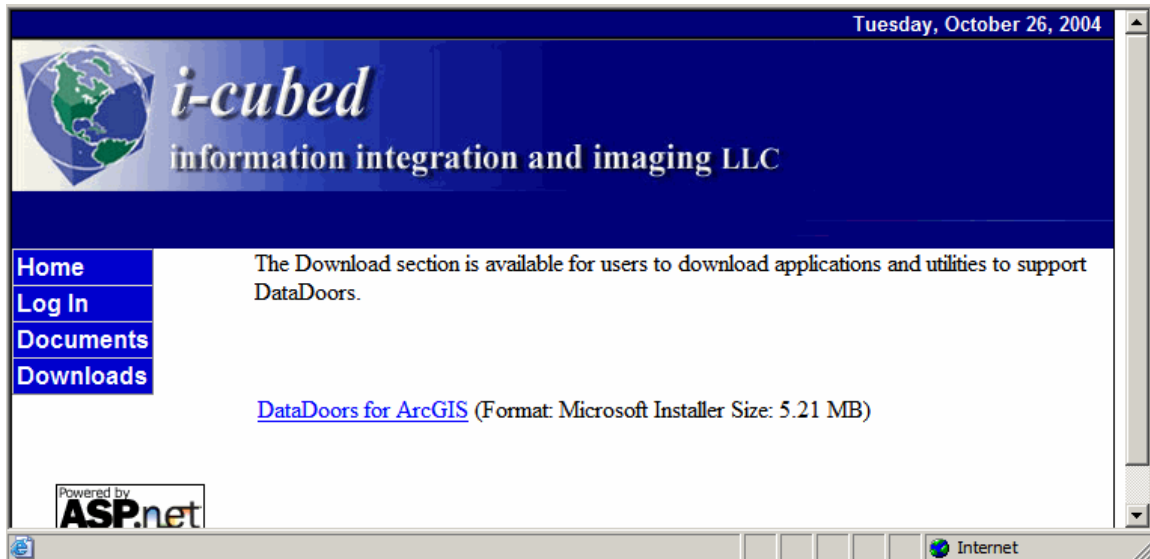
Although DataDoors is easy to learn and use, sometimes it makes more sense to have someone walk you through it the first time. If you send an email to jgreen@i3.com, she will set up a time to do a $\frac{1}{2}$ hour web based training session. That is all you'll need.

Installation Details

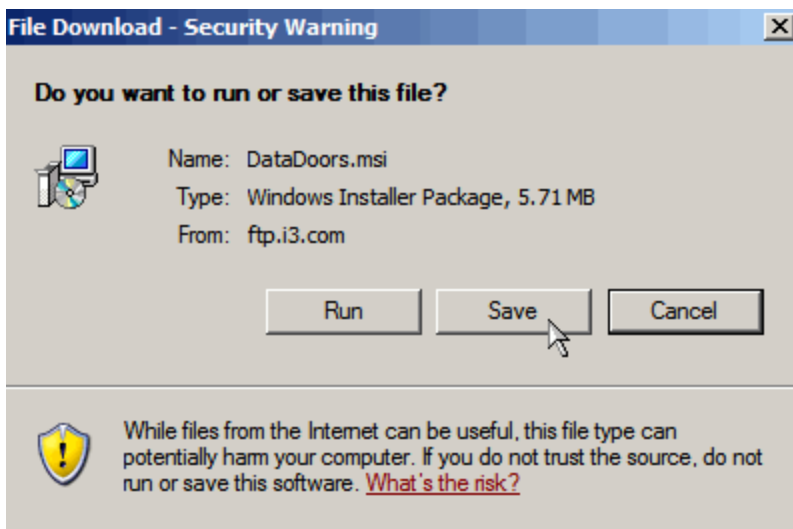
1. Go to your Internet Explorer and enter in the following address:

<http://www.datadoors.net/Downloads/Default.aspx>

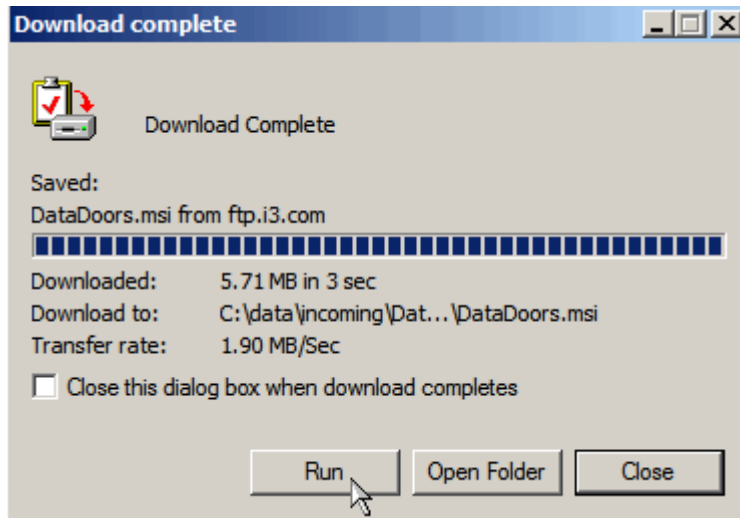
2. Click on the link called "DataDoors for ArcGIS".



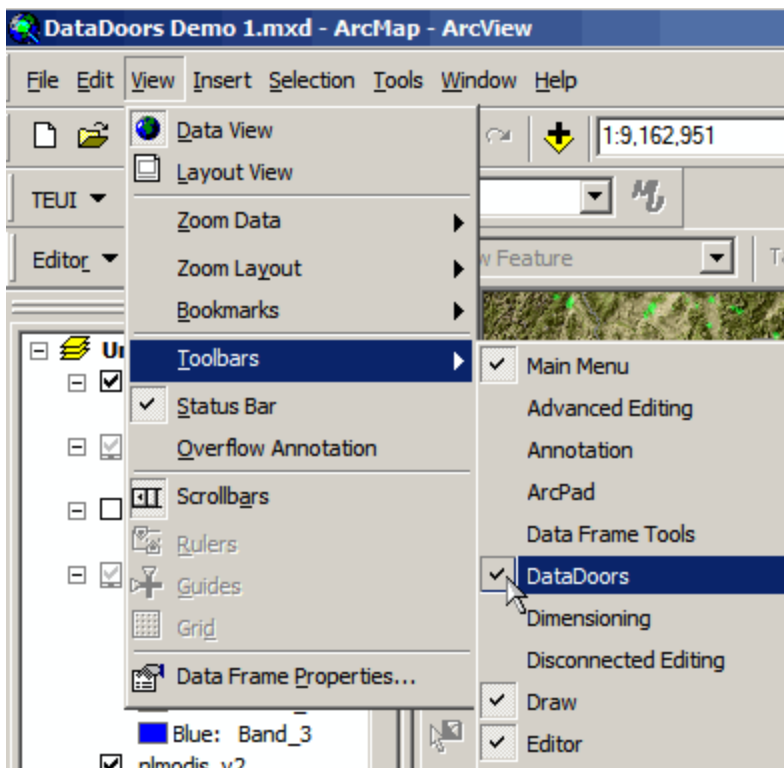
3. Save the file to your computer.



4. When the download is complete (just a few seconds) click on "Run"



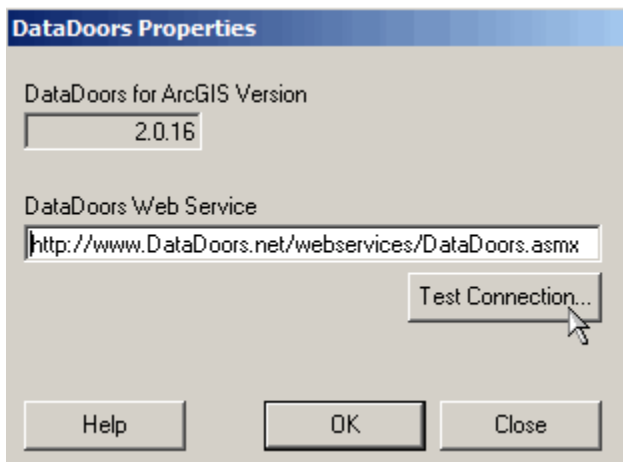
5. You may be asked to reboot your computer, this is not necessary.
6. Launch ESRI ArcMap 8 or 9.
7. Go to View | Toolbars and select DataDoors.



8. Click on DataDoors Toolbar and select Properties.



9. In the DataDoors Web Service box enter
<http://www.DataDoors.net/webservices/DataDoors.asmx>



(You can always find this by logging into www.DataDoors.net, it will be at the bottom of the welcome page.)

10) Click the "Test Connection" button.

11) If everything worked, click "Close"

12) Click OK

You're done!

If you have any questions, concerns or suggestions, please contact DataDoors support at 1-800-472-8328 or support@datadoors.net.